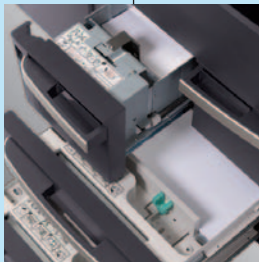


CS 620 | Black & White Multifunctional System

DOCUMENT IMAGING WITH CONFIDENCE.



Copystar CS 620 Black & White MFP:

The **Copystar CS 620 Black & White Multifunctional System** delivers a robust imaging solution designed to meet the high-volume demands of your business. At 62 ppm, and with a flexible choice of paper handling and finishing options, the CS 620 will successfully meet all your print, copy and scan requirements.

AWARD-WINNING RELIABILITY FOR DOCUMENT IMAGING YOUR BUSINESS CAN DEPEND ON

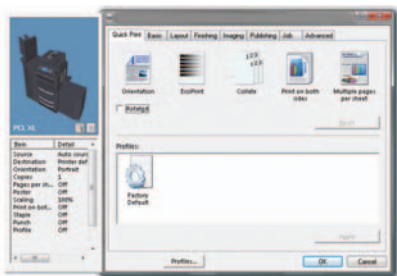
The reliability factor sets Copystar apart from the competition. Copystar MFPs are consistently recognized by industry analysts and users for their long life consumables and components, as well as unsurpassed preventive maintenance intervals.

- Innovative technology extends the **long life consumables** in the CS 620, reducing the frequency to replace major components
- **Industry-leading preventive maintenance intervals** reduce the overall frequency of service calls and maximize uptime
- The CS 620 incorporates patented **Amorphous Silicon drum technology**, with a rated yield of 3.6 million pages for a durable imaging system day-in and day-out
- **High maximum monthly volume** set at 350,000 pages ensures work environments can efficiently meet critical demands and deadlines

Your business is your top priority, and you demand uncompromising dependability across your entire enterprise. The CS 620 delivers a winning, long-term solution for all your critical document imaging requirements. **That's Copystar Confidence!**

POWER AT THE DEVICE AND AT THE DESKTOP

When taking advantage of optional network print, Copystar's advanced **KX Driver** allows users to access the unique features integrated into each Copystar MFP from one common print driver.



Maximum Productivity

A standard 128MB of RAM and 40GB Hard Disk Drive maximize your document processing and ensure all of your document output requirements are handled with ease.

Network Print

The 600MHz print system supports PCL and Postscript and can connect to virtually any network environment.

Extensive Stack Capacity

An impressive 3,000 sheet stack capacity for your finished output means long runs are handled with ease.

Advanced Finishing

This robust finisher supports multi-position stapling, with options including 2/3 hole punch, multi-tray, and booklet folding, bringing advanced finishing needs in-house.

Efficient Duplex

Standard stackless duplex helps you reduce paper consumption by producing 2-sided originals on stock up to 90 lb Index from the paper trays.



FLEXIBILITY TO GROW WITH YOU



4,000 Sheet Large Capacity Tray

- Letter Sized Sheets
- 16 lb Bond – 90 lb Index



4,000 Sheet Large Capacity Tray

- Letter, Legal, or Ledger Sized Sheets (adjustable)
- 16 lb Bond – 90 lb Index



3,000 Sheet Document Finisher

- Multi-Position Staple
- Optional 2 and 3 Hole Punch
- Optional 5 Bin Multi-Tray
- Optional Booklet Folder
- 16 lb Bond – 110 lb Index

Power, Performance, Flexibility

is of your business. The CS 620 incorporates ultra-reliability, high-performance and exceptional imaging to boost workplace productivity.
n requirements - the first time, every time.

Fast Dual Scan Document Processor

A high capacity of 260 sheets at network scan speeds up to a fast 100 images per minute improves department productivity – with the versatility to handle multiple paper sizes and mixed originals.

Easy-to-Use Screen Display

Hard keys and the intuitive large touch screen display allow you to navigate quickly and efficiently for all your copy and scan requirements.

Optional Network Scan

Enhance your file-sharing and archiving with advanced scanning capabilities: Scan to e-mail, Scan to Folder, and Scan to FTP.

Optional Large Capacity Tray

For paper-intensive environments, the choice of 2 optional large capacity trays increases paper capacity to 8,150 sheets, eliminating the frequency to reload paper.

Versatile Paper Handling

Standard duplex and a 4,150 sheet paper capacity from 5 sources enhances flexibility, with statement to ledger sized paper and paper weights up to 110 lb Index.

HIGH END PERFORMANCE & DESIGN

- **Fast, Productive Document Processing.** Whether you need to copy, print, or scan, the CS 620 combines fast input and output speeds for all your document imaging tasks.
- **High Capacity Toner.** With a high capacity toner yield of 55,000 pages (at 6% coverage), busy work environments will be replacing toner less frequently with the CS 620.
- **Proven Technology & Ultra-Reliability.** Our award-winning technology incorporates long life imaging components that can dramatically lower your total cost, while providing high productivity and exceptional image quality.
- **Ultimate Document Creation & Output Efficiency.** PRESCRIBE® offers your business a flexible, on-demand printing solution for forms, letterhead and similar corporate documents. PRESCRIBE eliminates the cost and storage space associated with preprinted forms.
- **Integrated Solutions.** Leverage the full potential of your MFP with tools and utilities designed to maximize your security, management and accounting capabilities.

MEET YOUR BUSINESS DEMANDS



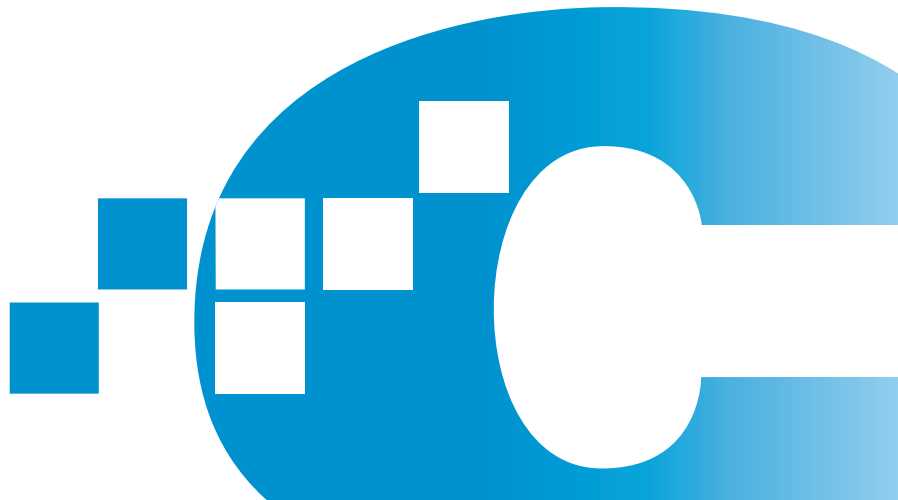
Optional 5 Bin Multi-Tray for 3,000 Sheet Finisher

- 150 Pages per Bin
- Specify Trays for Multiple Users
- Letter to Ledger Sized Sheets
- Accepts Finished Output
- 13 lb Bond – 90 lb Index



Optional Booklet Folder for 3,000 Sheet Finisher

- Folding up to 16 Sheets
- Saddle Stitch
- Letter, Legal, or Ledger Sized Booklets
- 16 lb Bond – 110 lb Index



CS 620



Shown with optional 4,000 Sheet Adjustable LCT, 3,000 Sheet Finisher with Multi-Tray and Booklet Folder



The CS 620 comes standard with a productive Dual Scan Document Processor (maximum capacity of 260 sheets)



Standard paper capacity of the CS 620 is an impressive 4,150 sheets, featuring dual 1,500 Sheet Letter Decks and dual 525 Sheet Adjustable Paper Drawers



The CS 620 features High Capacity Toner rated for 55,000 pages (6%). Replacing toner containers is a simple task for any user.

Basic Specifications

Configuration	Black & White Multifunctional System - Copy / Optional Print / Optional Scan
Pages Per Minute	Letter: 62 ppm; Legal: 37 ppm; Ledger: 31 ppm
Warm-up Time	30 Seconds or Less
First Copy/Print Out Time	3.6 Seconds
Copy Resolution	1,800 x 600 dpi (interpolated); 600 x 600 dpi
Copy/Scan Memory / Hard Disk Drive (HDD)	128 MB RAM / 40 GB HDD
Duplex	Standard Stackless, Statement to Ledger, 16 - 43 lb Bond
Electrical Requirements / Weight	120V, 60Hz, 16.0 A / 414.5 lbs (mainframe and DP)
Max Monthly Duty Cycle	350,000 Pages Per Month

Paper Supply

Standard Paper Sources	Dual 525 Sheet Universal Drawers, Dual 1,500 Sheet Letter Decks, 100 Sheet MPT; Auto Selection / Switching, Add Paper While Running
Optional Paper Sources	PF-650(B) : 4,000 Sheet Large Capacity Tray - Letter PF-660(B) : 4,000 Sheet Large Capacity Tray - Letter to Ledger
Paper Capacity	Standard: 4,150 Sheets; Maximum: 8,150 Sheets
Paper Size	5.5" x 8.5" - 11" x 17" (Statement to Ledger)
Paper Weight	12 lb Bond - 90 lb Index; MPT: 13 lb Bond - 110 lb Index
Input Materials	Bond Paper, Recycled Paper, Transparencies, Labels, Envelopes

Document Processor

Type / Capacity	Dual Scan Document Processor / 260 Sheets (Letter)
Scan Speed for Copy	82 ipm
Acceptable Originals / Weights	5.5" x 8.5" - 11" x 17", Mixed Size Originals / 13 - 43 lb Bond

Duplex

Paper Size	5.5" x 8.5" - 11" x 17" (Statement to Ledger)
Paper Weight	16 - 43 lb Bond
Duplex Modes	1:2; 2:2; Book:2; 2:1

Copy Specifications

Image Mode	Text, Photo, Text/Photo, Auto, Manual, Map
Continuous Copy	1 - 9,999 / Auto Reset to 1
Additional Copy Features	Auto Center, Magnification and Paper Select, Batch Copy, Booklet Mode, Book Mode, Combine Image, Covers, Inserts, Border Erase, Image Overlay, Image Rotate, Positive/Negative Reverse, Margin Shift, Mirror Image, Memo Mode, Modify Copy, Proof Copy, Page Numbering, Transparency Mode, XY Zoom, Shortcut Keys
Job Management	Job Interrupt, Job Build, 9 Job Programs, Repeat Copy, 1,000 Department Codes
Magnification / Zoom	Full Size, 5 Reduction, 5 Enlargement Preset Ratios, 25 - 400% in 1 step increments
HDD Storage	Shared Data Box, Synergy Box, Forms Box

Print Specifications

Controller	PowerPC 750CXe / 600MHz
Printer Memory	Standard 64MB RAM, upgradable to 576MB; Optional e-MPS HDD
PDLs / Emulations	PRESCRIBE, PCL6 (5e, XL), KPDL3 (PS3), KC-GL, IBM ProPrinter X24e, Epson LQ-850, Diablo 630, Line Printer
Fonts	136 KPDL3, 80 PCL6, 1 Bitmap
Windows OS Compatibility	Windows 2000 / XP / 2003 / Vista / 2008
Mac OS Compatibility	Mac OS 10.x
UNIX OS Compatibility	Sun OS4.1.x; Solaris 2.x; AIX; HP-UX (LPR)
Interfaces	Standard: 10/100BaseTX, Hi-Speed USB 2.0, Parallel IEEE1284, KUIO-LV Slots (2)
Network Print and Supported Protocols	TCP/IP, IPX/SPX, AppleTalk, NetBEUI
Drivers	KX Driver, Mini Driver, PPD for Mac, PPD for UNIX
Utilities	PRESCRIBE Utilities, PDF Direct Print, KMnet Admin, KMnet for Accounting, KMnet Viewer, Status Monitor
Additional Print Features	e-MPS Features (Secure Print, Job Storage, Virtual Mailbox) (requires Optional HD-10 e-MPS HDD)

Scan Specifications

Scan Resolutions	200, 300, 400, 600 dpi
Network Scan Speed	600 dpi - Simplex: 82 ipm / Duplex: 82 ipm; 400, 300 and 200 dpi - Simplex: 100 ipm / Duplex: 110 ipm
File Formats	PDF, TIFF
Connectivity / Supported Protocols	10/100BaseTX / TCP/IP
Scanning Functions	Scan to Folder, Scan to e-mail, Scan to FTP, TWAIN Scan
Driver	TWAIN Driver

Optional Scan System (H)

Scan Resolutions	200, 300, 400, 600 dpi
Network Scan Speed	600 dpi - Simplex: 82 ipm / Duplex: 82 ipm; 400, 300 and 200 dpi - Simplex: 100 ipm / Duplex: 110 ipm
File Formats	PDF, TIFF
Connectivity / Supported Protocols	10/100BaseTX / TCP/IP
Scanning Functions	Scan to Folder, Scan to e-mail, Scan to FTP, TWAIN Scan
Driver	TWAIN Driver

Optional 3,000 Sheet Finisher

Stack / Staple Capacity	Main Tray: 3,000 Sheets; Sub Tray: 200 Sheets
Paper Size	Main Tray: 8.5" x 11" - 11" x 17"; Sub Tray: 5.5" x 8.5" - 11" x 17"
Paper Weight	16 lb Bond - 110 lb Index
Edge Staple Position	3 Positions: Top Left, Bottom Left, Center Bind
Acceptable Weights for Staple	16 - 28 lb Bond
Optional Multi-Tray	MT-1(B) : Includes 5 Trays; Supports 13 lb Bond - 90 lb Index Stack Capacity per Tray: 150 Sheets: 5.5" x 8.5", 8.5" x 11"; 50 Sheets: 8.5" x 14", 11" x 17"
Optional Punch	PH-4A : 2 and 3 Hole Punch Unit, Supports 8.5" x 11" - 11" x 17", 13 lb Bond - 110 lb Index
Optional Saddle Stitch / Fold	BF-1(B) : Supports 8.5" x 11", 8.5" x 14", 11" x 17", 16 lb Bond - 110 lb Index; Over 20 lb Bond Single Sheet Folding Capacity: 1-5 Sheets - 30 Booklets; 6-10 Sheets - 20 Booklets; 11-16 Sheets - 10 Booklets

Optional Large Capacity Trays

Paper Capacity	4,000 Sheets
Paper Size	PF-650(B) : 8.5" x 11" PF-660(B) : 8.5" x 11", 8.5" x 14", 11" x 17"
Paper Weight	16 lb Bond - 90 lb Index

Additional Options

KYOcapture, KYOcapture Express, Data Security Kit (B) Provides Security Overwrite, HD-10 e-MPS Printer Hard Disk Drive, IB-40, IB-40 (Type H) NIC supports IPv6 protocol, Copy Tray

Specifications and design are subject to change without notice.
For the latest on connectivity visit www.copystar.com.
All trademarks are the property of their respective owners.

Kyocera Mita America, Inc. Headquarters: 225 Sand Road, Fairfield, NJ 07004-0008, USA
©2009 Kyocera Mita America, Inc.

IC#855D400202

